

PewResearchCenter

---



February 1, 2011

# Unauthorized Immigrant Population: National and State Trends, 2010

---

**FOR FURTHER INFORMATION CONTACT:**

Jeffrey S. Passel, Senior Demographer

D'Vera Cohn, Senior Writer

1615 L St, N.W., Suite 700

Washington, D.C. 20036

Tel (202) 419-3600

Fax (202) 419-3608

[www.pewhispanic.org](http://www.pewhispanic.org)

Copyright © 2011

## Overview

As of March 2010, 11.2 million unauthorized immigrants were living in the United States, virtually unchanged from a year earlier, according to new estimates from the Pew Hispanic Center, a project of the Pew Research Center. This stability in 2010 follows a two-year decline from the peak of 12 million in 2007 to 11.1 million in 2009 that was the first significant reversal in a two-decade pattern of growth.

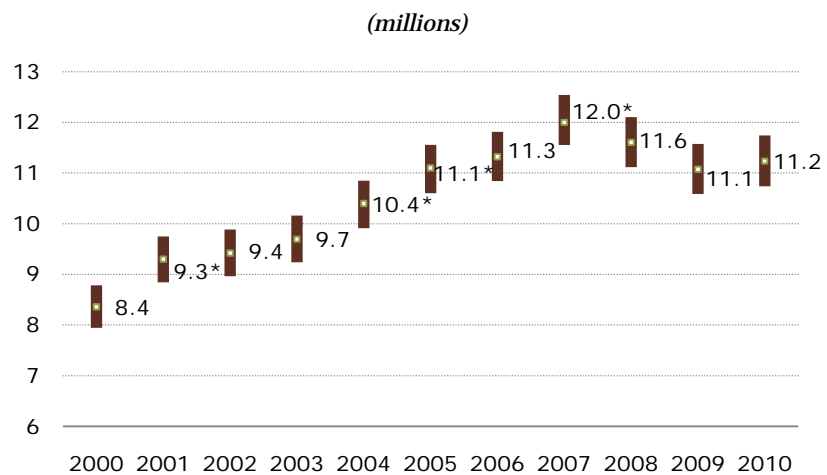
The number of unauthorized immigrants

in the nation's workforce, 8 million in March 2010, also did not differ from the Pew Hispanic Center estimate for 2009. As with the population total, the number of unauthorized immigrants in the labor force had decreased in 2009, from its peak of 8.4 million in 2007.

The number of children born to at least one unauthorized-immigrant parent in 2009 was 350,000, [essentially the same as it was a year earlier](#). An analysis of the year of entry of unauthorized immigrant parents of babies born in 2009 indicates that 61% arrived before 2004, 30% arrived from 2004 to 2007, and 9% arrived from 2008 to 2010.

According to the Pew Hispanic Center, unauthorized immigrants made up 3.7% of the nation's population and 5.2% of its labor force in March 2010. Births to unauthorized immigrant parents accounted for 8% of newborns from March 2009 to March 2010, according to the center's estimates, which are based mainly on data from the government's Current Population Survey.

**Figure 1**  
**Estimates of the U.S. Unauthorized Immigrant Population, 2000-2010**



Notes: Bars indicate low and high points of the estimated 90% confidence interval. The symbol \* indicates the change from the previous year is statistically significant.

Source: Pew Hispanic Center estimates based on residual methodology applied to March Supplements to the Current Population Survey. See Methodology.

PEW RESEARCH CENTER

The decline in the population of unauthorized immigrants from its peak in 2007 appears due mainly to a decrease in the number from Mexico, which went down to 6.5 million in 2010 from 7 million in 2007. Mexicans remain the largest group of unauthorized immigrants, accounting for 58% of the total.

The decline in the population of unauthorized immigrants since 2007 has been especially marked in some states that recently had attracted large numbers of unauthorized immigrants. The number has decreased in Colorado, Florida, New York and Virginia. The combined unauthorized immigrant population of three contiguous Mountain West states—Arizona, Nevada and Utah—also declined.

The number of unauthorized immigrants may have declined in other states as well, but this cannot be stated conclusively because the measured change was within the margin of error for these estimates.

In contrast to the national trend, the number of unauthorized immigrants has grown in some West South Central states. From 2007 to 2010, there was a statistically significant increase in the combined unauthorized immigrant population of Louisiana, Oklahoma and Texas. The change was not statistically significant for these states individually, but it was for the combined three states. Texas has the second largest number of unauthorized immigrants, trailing only California.

Despite the recent decline and leveling off, the number of unauthorized immigrants living in the United States has tripled since 1990, when it was 3.5 million. The size of this population grew by a third since 2000, when was 8.4 million.

The estimates are produced using a multistage method that subtracts the legal foreign-born population from the total adjusted foreign-born population, with the residual then used as the source of information about unauthorized immigrants. The source of these data is the U.S. Census Bureau's March Current Population Surveys.

**Table 1**  
**States with Changes in**  
**Unauthorized Immigrant**  
**Populations, 2007-2010**

(thousands)

|                 | 2010  | 2007  | Change |
|-----------------|-------|-------|--------|
| <b>Decline</b>  |       |       |        |
| Florida         | 825   | 1,050 | -230   |
| New York        | 625   | 825   | -200   |
| Virginia        | 210   | 325   | -100   |
| Colorado        | 180   | 240   | -65    |
| AZ-UT-NV        | 700   | 850   | -160   |
| <b>Increase</b> |       |       |        |
| TX-LA-OK        | 1,800 | 1,550 | +240   |

Note: Changes shown are statistically significant based on 90% confidence interval, and are the only statistically significant changes for 2007 to 2010 for individual states. Unauthorized estimates are rounded. Change is computed from unrounded data and independently rounded.

Source: Pew Hispanic Center estimates based on augmented March Supplements to the Current Population Survey. See Methodology.

PEW RESEARCH CENTER

Because these estimates are derived from sample surveys, they are subject to uncertainty from sampling error, as well as other types of error. Each annual estimate of the unauthorized population is actually the middle point of a range of possible values that could be the true number. Additionally, the change from one year to the next has its own margin of error.

Because of the margin of error in these estimates, two numbers may look different but cannot be said definitively to be different. For example, there is no statistically significant difference between the estimate of the unauthorized population for 2009 (11.1 million) and the estimate for 2010 (11.2 million). Similarly, some state estimates for single years are based on small samples; especially in less populous states, two single years should not be compared.

These ranges represent 90% confidence intervals, meaning that there is a 90% probability that the range contains the true value.

Although the estimates presented here indicate trends in the size and composition of the unauthorized-immigrant population, they are not designed to answer the question of why these changes occurred. There are many possible factors. The deep recession that began in the U.S. economy in late 2007 officially ended in 2009, but recovery has been slow to take hold and unemployment remains high. Immigration flows have tended to decrease in previous periods of economic distress.

The period covered by this analysis also has been accompanied by changes in the level of immigration enforcement and in enforcement strategies, not only by the federal government but also at state and local levels. Immigration also is subject to pressure by demographic and economic conditions in sending countries. This analysis does not attempt to quantify the relative impact of these forces on levels of unauthorized immigration.

## About this Report

This report estimates the size of the unauthorized immigrant population, as well as the unauthorized immigrant labor force for the nation and each state in March 2010. For the nation, it also describes this population by region or country of birth and arrival period. For some of these variables, the report provides annual trends from 2000 onward. Updating and expanding on an earlier report about U.S.-born children of unauthorized immigrants, the report provides estimates and trends for the status of children of unauthorized immigrants as well as information about their parents' period of arrival and country of origin.

The Pew Hispanic Center estimates the unauthorized immigrant population using the “residual method,” a well-developed and widely accepted technique that is based on official government data. Under this methodology, a demographic estimate of the legal foreign-born population—naturalized citizens, legal permanent residents, temporary legal residents and refugees—is subtracted from the total foreign-born population. The remainder, or residual, is the source of population estimates and characteristics of unauthorized immigrants.

These Pew Hispanic Center estimates use data mainly from the Current Population Survey (CPS), a monthly survey of about 55,000 households conducted jointly by the U.S. Bureau of Labor Statistics and the Census Bureau. It is best known as the source for monthly unemployment statistics. Each March, the CPS sample size and questionnaire are expanded to produce additional data on the foreign-born population and other topics. The Pew Hispanic Center estimates make adjustments to the government data to compensate for undercounting of some groups, and therefore its population totals differ somewhat from the ones the government uses. Estimates for any given year are based on a March reference date.

Because of small sample size in many states and potentially large sampling variability, some state estimates presented are based on multiyear averages. For the 34 states with fewer than 50 cases of unauthorized immigrant households in the 2010 sample survey, the estimates for that year are an average of 2009 and 2010. These states are Alabama, Alaska, Arkansas, Delaware, Hawaii, Idaho, Indiana, Iowa, Kansas, Kentucky, Louisiana, Maine, Massachusetts, Michigan, Minnesota, Mississippi, Missouri, Montana, Nebraska, New Hampshire, New Mexico, North Dakota, Ohio, Oklahoma, Pennsylvania, Rhode Island, South Carolina, South Dakota, Tennessee, Utah, Vermont, West Virginia, Wisconsin and Wyoming. Estimates for other states and for the District of Columbia are based solely on 2010 data.

All 2007 state estimates were derived by calculating the average share of the national unauthorized immigrant population for 2006-2008 that was held by each state, then applying that share to the 2007 national total.

For more detail, see the Methodology appendix.

### **A Note on Terminology**

“Foreign born” refers to an individual who is not a U.S. citizen at birth or, in other words, who is born outside the U.S., Puerto Rico or other U.S. territories and whose parents are not U.S. citizens. The terms “foreign born” and “immigrant” are used interchangeably.

“U.S. born” refers to an individual who is a U.S. citizen at birth, including people born in the United States, Puerto Rico or other U.S. territories, as well as those born elsewhere to parents who are U.S. citizens.

The “legal immigrant” population is defined as people granted legal permanent residence; those granted asylum; people admitted as refugees; and people admitted under a set of specific authorized temporary statuses for longer-term residence and work. This group includes “naturalized citizens,” legal immigrants who have become U.S. citizens through naturalization; “legal permanent resident aliens,” who have been granted permission to stay indefinitely in the U.S. as permanent residents, asylees or refugees; and “legal temporary migrants,” who are allowed to live and, in some cases, work in the U.S. for specific periods of time (usually longer than one year).

“Unauthorized immigrants” are all foreign-born non-citizens residing in the country who are not “legal immigrants.” These definitions reflect standard and customary usage by the Department of Homeland Security and academic researchers. The vast majority of unauthorized immigrants entered the country without valid documents or arrived with valid visas but stayed past their visa expiration date or otherwise violated the terms of their admission. Some who entered as unauthorized immigrants or violated terms of admission have obtained work authorization by applying for adjustment to legal permanent status or by obtaining Temporary Protected Status (TPS). Data are very limited, but this “quasi-legal” group could account for as much as 10% of the unauthorized population. Many could also revert to unauthorized status.

“Children” are people under age 18 who are not married. “Adults” are ages 18 and older.

“Children of unauthorized immigrants” or “children of unauthorized immigrant parents” include both foreign-born and U.S.-born children who live with at least one unauthorized immigrant parent.

### About the Authors

**Jeffrey S. Passel** is a senior demographer at the Pew Hispanic Center. He is a nationally known expert on immigration to the United States and on the demography of racial and ethnic groups. In 2005, Dr. Passel was made a fellow of the American Statistical Association, which cited his outstanding contributions to the measurement of population composition and change. He formerly served as principal research associate at the Urban Institute’s Labor, Human Services and Population Center. From 1987 to 1989, he was assistant chief for population estimates and projections in the Population Division of the U.S. Census Bureau.

**D’Vera Cohn** is a senior writer at the Pew Research Center. From 1985 to 2006, she was a reporter at The Washington Post, where she wrote chiefly about demographic trends and immigration. She was the newspaper’s lead reporter for the 2000 Census.

### Recommended Citation

Jeffrey S. Passel and D’Vera Cohn. “Unauthorized Immigrant Population: National and State Trends, 2010.” Washington, DC: Pew Hispanic Center (February 1, 2011).

### Acknowledgments

Paul Taylor provided editorial guidance in the drafting of this report. Daniel Dockterman and Gabriel Velasco prepared the charts and tables for this report; Daniel Dockterman checked its charts, tables and maps. Michael Keegan prepared the maps for this report. Marcia Kramer served as copy editor.

## About the Pew Hispanic Center

The Pew Hispanic Center is a nonpartisan research organization that seeks to improve public understanding of the diverse Hispanic population in the United States and to chronicle Latinos' growing impact on the nation. It does not take positions on policy issues. The Center is part of the Pew Research Center, a nonpartisan "fact tank" based in Washington, D.C., and it is funded by The Pew Charitable Trusts, a Philadelphia-based public charity. All of the Center's reports are available at [www.pewhispanic.org](http://www.pewhispanic.org).

The staff of the Pew Hispanic Center is:

*Paul Taylor, Director*

*Rakesh Kochhar, Associate Director for Research*

*Richard Fry, Senior Research Associate*

*Gretchen Livingston, Senior Researcher*

*Daniel Dockterman, Research Assistant*

*Mark Hugo Lopez, Associate Director*

*Jeffrey S. Passel, Senior Demographer*

*Gabriel Velasco, Research Analyst*

*Mary Seaborn, Administrative Manager*



## Contents

| SECTION                                   | PAGE |
|---|------|
| Overview                                  | 1    |
| About this Report                         | 4    |
| A Note on Terminology                     | 5    |
| About the Authors                         | 6    |
| Recommended Citation                      | 6    |
| Acknowledgments                           | 6    |
| About the Pew Hispanic Center             | 7    |
| Current Estimates and Trends              | 9    |
| Births and Children                       | 12   |
| State Settlement Patterns                 | 14   |
| Workers                                   | 17   |
| References                                | 18   |
| Appendix A: Additional Tables and Figures | 21   |
| Appendix B: Methodology                   | 25   |
| Appendix C: Maps                          | 28   |

## Current Estimates and Trends

The shrinkage of the unauthorized immigrant population from its 2007 peak apparently has halted, at least temporarily. According to Pew Hispanic Center estimates, there were 11.2 million unauthorized immigrants living in the United States in March 2010, statistically unchanged from the March 2009 estimate of 11.1 million.

The Pew Hispanic Center's March 2009 estimate had represented the first reversal in the size of the unauthorized-immigrant population in two decades. There were 3.5 million unauthorized immigrants living in the United States in 1990, a number that grew to 8.4 million in 2000. The population leveled off for two years and grew steadily from 2003 to 2007, when it peaked at 12 million. From 2007 to 2009, it shrank by 8%.<sup>1</sup>

Unauthorized immigrants represented 28% of the nation's foreign-born population of 40.2 million in March 2010, according to the Pew Hispanic Center estimates. The share is the same as it was in 2009 but a decline from 2007's 31%.

The other components of the foreign-born population are its 29 million legal immigrants: 14.9 million naturalized citizens, 12.4 million permanent residents and 1.7 million legal temporary migrants. The number of naturalized citizens grew significantly from 13.7 million in 2007; this increase is part of a longer-term trend in which **more immigrants are choosing to naturalize**. The number of legal permanent residents or legal temporary migrants showed no significant change.

**Table 2**  
Estimates of the U.S. Unauthorized Immigrant Population, 2000-2010

*(millions)*

| Year | Estimate    | Range         |
|------|-------------|---------------|
| 2010 | 11.2        | (10.7 - 11.7) |
| 2009 | 11.1        | (10.6 - 11.6) |
| 2008 | 11.6        | (11.1 - 12.1) |
| 2007 | <b>12.0</b> | (11.5 - 12.5) |
| 2006 | 11.3        | (10.8 - 11.8) |
| 2005 | <b>11.1</b> | (10.6 - 11.6) |
| 2004 | <b>10.4</b> | (9.9 - 10.8)  |
| 2003 | 9.7         | (9.2 - 10.2)  |
| 2002 | 9.4         | (9.0 - 9.9)   |
| 2001 | <b>9.3</b>  | (8.8 - 9.7)   |
| 2000 | 8.4         | (7.9 - 8.8)   |

Notes: Range represents the bounds of the estimated 90% confidence interval. Boldface indicates the change from the previous year is statistically significant.

Source: Pew Hispanic Center estimates based on residual methodology applied to March Supplements to the Current Population Survey. See Methodology.

PEW RESEARCH CENTER

<sup>1</sup> These trends are consistent with estimates from the Department of Homeland Security, which uses a similar methodology but a different data source, the Census Bureau's American Community Survey. The DHS estimates also indicate that the unauthorized immigrant population peaked in 2007, at 11.8 million.

The decline in the size of the unauthorized immigrant population from its peak in 2007 appears to be driven mainly by a decrease in the number of such immigrants from Mexico. In 2007, there were an estimated 7 million unauthorized immigrants from Mexico. In 2010, the number of Mexican unauthorized immigrants had declined to 6.5 million.

The unauthorized population from Mexico had grown steadily from 2001, when it

was 4.8 million, to its peak level in 2007. After that, there were no statistically significant changes in the Mexican-born unauthorized population until 2010, when the number showed a decline from three years earlier.

In a report last year, the Pew Hispanic Center concluded that inflows of unauthorized immigrants from Mexico had fallen off sharply, presaging the decline found in the 2010 estimates. According to the center's estimates, an average of 150,000 unauthorized immigrants from Mexico arrived annually during the period from March 2007 to March 2009, which was 70% below the annual average of 500,000 during the first half of the decade.

In addition to reduced inflows, the other ways in which an unauthorized population could decline are via an increase in the number of migrants voluntarily leaving the country, deportations, deaths or conversion to legal status. As the Pew Hispanic Center has previously reported, although many Mexican migrants voluntarily return home each year, there is no evidence that this number has grown in recent years.

Removals (deportations) have more than doubled over the past decade, reaching almost 400,000 in fiscal 2009. Mexicans have constituted the majority of deportations for at least the past decade. In 2009, more than 70% of deportees were Mexican, according to the Department of Homeland Security.

**Table 3**  
**Foreign-born Population**  
**by Legal Status, 2010**

(population in millions)

|                                 | Population | Share of Foreign Born |
|---------------------------------|------------|-----------------------|
| <b>Total foreign born</b>       | 40.2       | 100%                  |
| <b>Legal immigrants</b>         | 29.0       | 72%                   |
| Naturalized citizens            | 14.9       | 37%                   |
| Legal permanent resident aliens | 12.4       | 31%                   |
| Legal temporary migrants        | 1.7        | 4%                    |
| <b>Unauthorized immigrants</b>  | 11.2       | 28%                   |

Notes: Numbers may not sum to total due to rounding.

Source: Pew Hispanic Center estimates based on augmented March Supplements to the Current Population Survey. See Methodology.

PEW RESEARCH CENTER

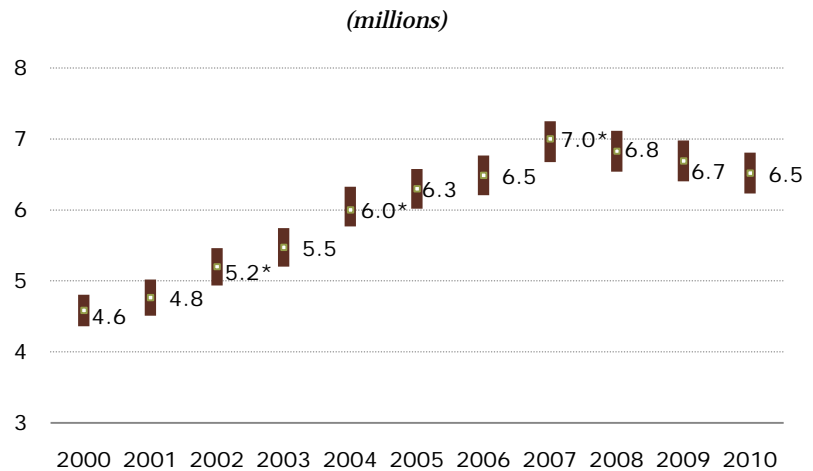
Because this population is relatively young, mortality is not likely to be an important factor. As for conversion to legal status, that is more difficult now than in the 1990s or earlier; the number of all status adjustments in the last three years is unchanged from average levels for 2001-2006, according to figures from the Department of Homeland Security's Yearbook of Immigration Statistics.

By contrast to the decline of Mexican unauthorized immigrants, the total estimated unauthorized population from other nations in Latin America was similar to what it was in 2007. The population from nations outside Latin America in 2010 also was no different from its 2007

total. Estimating change in unauthorized immigration from these nations is difficult, because the relatively small sample size makes for more volatility in year-to-year population changes.

Mexicans make up the majority of the unauthorized immigrant population, 58%, or 6.5 million. Other nations in Latin America account for 23% of unauthorized immigrants, or 2.6 million. Asia accounts for 11%, or about 1.3 million, and Europe and Canada account for 4%, or 500,000. African countries and other nations represent about 3%, or 400,000.

**Figure 2**  
Estimates of the U.S. Unauthorized Immigrant Population from Mexico, 2000-2010



Notes: Bars indicate low and high points of the approximate 90% confidence interval. The symbol \* indicates the change from the previous year is statistically significant.

Source: Pew Hispanic Center estimates based on residual methodology applied to March Supplements to the Current Population Survey. See Methodology.

PEW RESEARCH CENTER

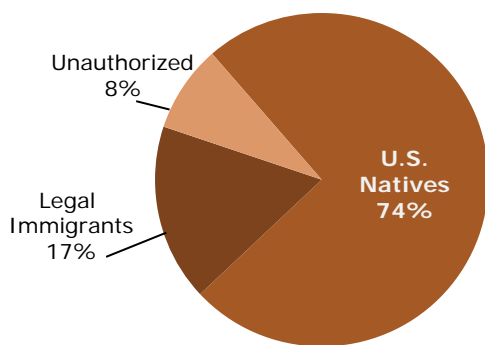
## Births and Children

Among births from March 2009 to March 2010, 350,000 newborns had at least one unauthorized parent, a number that statistically is no different from the estimate of 340,000 published by the Pew Hispanic Center for 2008-2009.

These newborns represented 8% of all births during this period, the same share as for the previous year. Unauthorized immigrants represent about 4% of the U.S. population but are relatively young and have high birthrates, which is why their newborns make up a higher share of all births.

Among all births in the U.S. in 2009-2010, 74% were to U.S.-born parents and 17% to legal immigrants.

**Figure 4**  
Parents' Status for Births in 2009

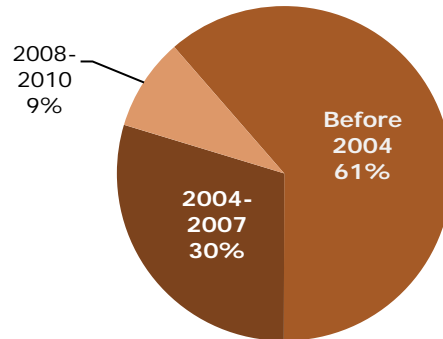


Notes: Births occurring March 2009–March 2010 based on population under age 1. Percentages may not add to 100% because of rounding.

Source: Pew Hispanic Center estimates based on augmented March Supplements to the Current Population Survey. See Methodology.

PEW RESEARCH CENTER

**Figure 3**  
Parents' Period of Arrival for U.S. Births to Unauthorized Immigrants in 2009



Notes: Births occurring March 2009–March 2010 based on population under age 1. Estimate is based on the most recently arrived parent. Percentages may not add to 100% because of rounding.

Source: Pew Hispanic Center estimates based on augmented March Supplements to the Current Population Survey. See Methodology.

PEW RESEARCH CENTER

The Pew Hispanic Center analysis also examined year-of-arrival patterns for unauthorized immigrant parents of babies born from March 2009 to March 2010, to see how long the parents had been in the United States before their children were born. If year of arrival was available for both parents, the analysis used the most recently arrived parent.

According to the analysis, 9% of these unauthorized immigrants who had babies in 2009-2010 had arrived in the U.S. in 2008 or later. An additional 30% arrived from 2004 to 2007, and the remaining 61% arrived in the United States before 2004.

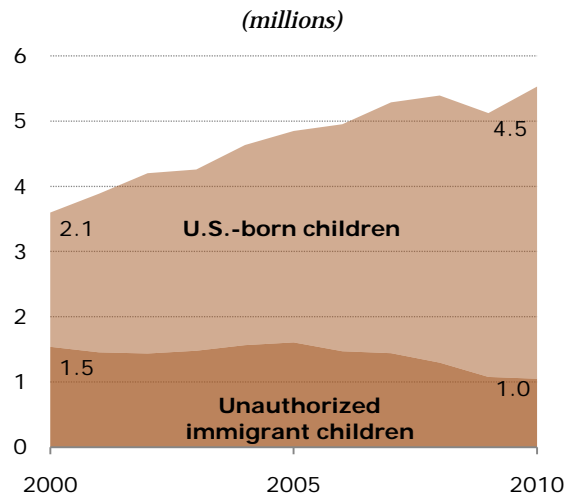
As with previous analyses, the Pew Hispanic Center finds that among all children of unauthorized immigrants—an estimated 5.5 million in 2010—a growing share was born in the United States and therefore they are U.S. citizens by birthright.

Among children of unauthorized immigrants, an estimated 4.5 million are U.S.-born; 1 million are foreign-born and therefore unauthorized. The number of unauthorized children has declined from a peak of 1.6 million in 2005. The number of U.S.-born children has more than doubled from 2.1 million in 2000.<sup>2</sup>

The 14th Amendment to the U.S. Constitution, adopted in 1868, grants an automatic right to citizenship to anyone born in the United States. In recent months, some prominent national and state elected officials have urged that this right be repealed at the national or state level, on the grounds that it attracts unauthorized immigrants to the United States. A [nationwide survey by the Pew Research Center in October](#) found that registered voters are split (46% to 46%) about whether to amend the Constitution to end birthright citizenship. A majority of Republican respondents (67%) favor amending the Constitution, compared with about half of independents (48%) and a minority of Democrats (30%).

Mexico is more dominant as a country of origin among unauthorized-immigrant parents than it is among all unauthorized immigrants. Among children with at least one unauthorized immigrant parent, 70% have parents from Mexico, 17% from other Latin American countries, 7% from Asia, 2% from Europe and Canada, and 3% from Africa and other nations.

**Figure 5**  
**Children with at Least One**  
**Unauthorized Immigrant Parent,**  
**by Status, 2000-2010**



Note: Children are persons under age 18 who are not married.

Source: Pew Hispanic Center estimates based on augmented March Supplements to the Current Population Survey. See Methodology.

PEW RESEARCH CENTER

<sup>2</sup> In 2009, there were an estimated 4 million U.S.-born children of unauthorized immigrants. Users are cautioned that the estimates for demographic components of change, such as births, may not be entirely consistent with apparent population change because of the potentially large sampling error in year-to-year differences.

## State Settlement Patterns

Analysis of state trends from 2007 to 2010 indicates that four states had a statistically significant decline in their populations of unauthorized immigrants, and the combined population of three other contiguous states in the Mountain West decreased. There was a statistically significant increase in the combined population of three contiguous West South Central states. No other states had statistically significant change over this period.

The four individual states where the number of unauthorized immigrants declined from March 2007 to March 2010 were New York, Florida, Virginia and Colorado. Additionally, the combined unauthorized immigrant population in Arizona, Nevada and Utah also decreased during that period, although the change was not statistically significant for any of those states individually.

Florida had an estimated 825,000 unauthorized immigrants in 2010, a decline from 1.05 million in 2007. Nevertheless, Florida continued to rank third among states in the size of its unauthorized immigrant population. New York's estimated unauthorized immigrant population in 2010, 625,000, declined from an estimated 825,000 in 2007. New York ranked fourth in the size of its unauthorized population in 2010, as it did in 2007.

There were an estimated 210,000 unauthorized immigrants living in Virginia in 2010, a decline from 325,000 in 2007. In Colorado, an estimated 180,000 unauthorized immigrants lived in the state in 2010, compared with 240,000 in 2007.

In the Mountain West, the combined unauthorized immigrant population of Arizona, Nevada and Utah declined to an estimated 700,000 from an estimated 850,000 in 2007.

**Table 4**  
**States with Largest Unauthorized Immigrant Populations, 2010**  
(thousands)

|                   | Estimated Population | Range                    |
|-------------------|----------------------|--------------------------|
| <b>U.S. Total</b> | <b>11,200</b>        | <b>(10,700 - 11,700)</b> |
| California        | 2,550                | (2,350 - 2,750)          |
| Texas             | 1,650                | (1,450 - 1,850)          |
| Florida           | 825                  | (725 - 950)              |
| New York          | 625                  | (525 - 725)              |
| New Jersey        | 550                  | (425 - 650)              |
| Illinois          | 525                  | (425 - 625)              |
| Georgia           | 425                  | (300 - 550)              |
| Arizona           | 400                  | (275 - 500)              |
| North Carolina    | 325                  | (240 - 425)              |
| Maryland          | 275                  | (200 - 325)              |
| Washington        | 230                  | (140 - 325)              |
| Virginia          | 210                  | (170 - 250)              |

Note: Range represents approximate 90% confidence interval around estimated population.

Source: Pew Hispanic Center estimates based on augmented March Supplements to the Current Population Survey. See Methodology.

PEW RESEARCH CENTER

Counter to the national trend, the combined unauthorized immigrant population grew in some West South Central states. In 2007, Louisiana, Oklahoma and Texas had a combined 1.55 million unauthorized immigrants living within their borders. In 2010, that number had grown to 1.8 million. Texas, with an unauthorized immigrant population of 1.65 million, ranks second only to California in the size of this group.

California has by far the largest unauthorized-immigrant population (2.55 million). It also is among the states where unauthorized immigrants constitute the largest shares of the overall populations. In addition to California (6.8%), other top states are Nevada (7.2%) and Texas (6.7%).

Unauthorized immigrants are concentrated in a relatively small number of states. The dozen states with the largest unauthorized numbers account for more than three-quarters (77%) of this population. Nearly a quarter (23%) lives in California. Nonetheless, unauthorized immigrants live in every state, and several of their top destinations, including Georgia and North Carolina, housed relatively few unauthorized immigrants two decades ago.

Mexicans account for half or more of the unauthorized population in all but 22 states and Washington, D.C. In seven states, they make up 80% or more of the unauthorized immigrant population. At the national level, 58% of unauthorized immigrants are Mexicans.

Among the five states with the largest unauthorized populations, Mexicans constitute less than half the stock in three of them—New York, New Jersey and Florida.

Because of small sample size in many states and potentially large sampling variability, some state estimates presented here are based on multiyear averages. For the 34 states with fewer than 50 cases of unauthorized immigrant households in the 2010 sample survey, the estimates

**Table 5**  
**States with Largest Share of**  
**Unauthorized Immigrants in the**  
**Population, 2010**

(thousands)

|                         | Total<br>Population | Unauthorized  |             |
|-------------------------|---------------------|---------------|-------------|
|                         |                     | Population    | Share       |
| <b>U.S. Total</b>       | <b>305,999</b>      | <b>11,200</b> | <b>3.7%</b> |
| Nevada                  | 2,655               | 190           | 7.2%        |
| California              | 37,211              | 2,550         | 6.8%        |
| Texas                   | 24,854              | 1,650         | 6.7%        |
| New Jersey              | 8,743               | 550           | 6.2%        |
| Arizona                 | 6,559               | 400           | 6.0%        |
| Maryland                | 5,702               | 275           | 4.6%        |
| District<br>of Columbia | 600                 | 25            | 4.5%        |
| Florida                 | 18,491              | 825           | 4.5%        |
| Georgia                 | 9,722               | 425           | 4.4%        |
| New Mexico              | 1,997               | 85            | 4.3%        |
| Oregon                  | 3,854               | 160           | 4.3%        |
| Illinois                | 12,841              | 525           | 4.1%        |

Note: Unauthorized estimates are rounded. Percentages are computed from unrounded data. In an earlier version of this table, "District of Columbia" was incorrectly labeled "Washington."

Source: Pew Hispanic Center estimates based on augmented March 2010 Supplement to the Current Population Survey. See Methodology.

PEW RESEARCH CENTER



for that year are an average of 2009 and 2010. These states are Alabama, Alaska, Arkansas, Delaware, Hawaii, Idaho, Indiana, Iowa, Kansas, Kentucky, Louisiana, Maine, Massachusetts, Michigan, Minnesota, Mississippi, Missouri, Montana, Nebraska, New Hampshire, New Mexico, North Dakota, Ohio, Oklahoma, Pennsylvania, Rhode Island, South Carolina, South Dakota, Tennessee, Utah, Vermont, West Virginia, Wisconsin and Wyoming. Estimates for other states and for the District of Columbia are based solely on 2010 data.

All 2007 state estimates were derived by calculating the average share of the national unauthorized immigrant population for 2006-2008 that was held by each state, then applying that share to the 2007 national total.

## Workers

There were 8 million unauthorized immigrants in the workforce in March 2010, down slightly from 2007, when there were 8.4 million. They represent 5.2% of the workforce, similar to their proportion for the past half-decade, when they represented 5% to 5.5% of workers.

State patterns differ widely, but generally states with large numbers or shares of unauthorized immigrants also have relatively large numbers or shares in the workforce.

States with the largest share of unauthorized immigrants in the workforce include Nevada (10%), California (9.7%), Texas (9%) and New Jersey (8.6%). Because unauthorized immigrants are more likely than the overall population to be of working age, their share in a state's workforce is substantially higher than their share of a state's population.

California also has the largest number of people in the labor force who are unauthorized immigrants (1.85 million), followed by Texas (1.1 million), Florida (600,000) and New York (450,000.).

**Table 6**  
**Unauthorized Immigrants in U.S. Civilian Labor Force, 2000-2010**

| Year | <i>(millions)</i>     |                      |
|------|-----------------------|----------------------|
|      | Estimated Labor Force | Share of Labor Force |
| 2010 | 8.0                   | 5.2%                 |
| 2009 | 7.8                   | 5.1%                 |
| 2008 | 8.2                   | 5.3%                 |
| 2007 | 8.4                   | 5.5%                 |
| 2006 | 7.8                   | 5.2%                 |
| 2005 | 7.4                   | 5.0%                 |
| 2004 | 6.8                   | 4.6%                 |
| 2003 | 6.5                   | 4.4%                 |
| 2002 | 6.4                   | 4.4%                 |
| 2001 | 6.3                   | 4.3%                 |
| 2000 | 5.5                   | 3.8%                 |

Note: Includes employed and unemployed workers.

Source: Pew Hispanic Center estimates based on augmented March Supplements to the Current Population Survey. See Methodology.

PEW RESEARCH CENTER

## References

- Bean, Frank D., R. Corona, R. Tuirán, and K. Woodrow-Lafield. 1998. "The Quantification of Migration Between Mexico and the United States," pp. 1-90 in *Migration Between Mexico and the United States, Binational Study, Vol. 1*. Mexico City and Washington, DC: Mexican Ministry of Foreign Affairs and U.S. Commission on Immigration Reform.
- Capps, Randolph, Leighton Ku, Michael Fix et al. 2002. *How Are Immigrants Faring After Welfare Reform? Preliminary Evidence from Los Angeles and New York City*. Final Report. Washington, DC: Urban Institute, March. <http://www.urban.org/url.cfm?ID=410426>
- Hoefler, Michael, Nancy Rytina, and Bryan C. Baker. 2010. *Estimates of the Unauthorized Immigrant Population Residing in the United States: January 2009*. Washington, DC: U.S. Department of Homeland Security, Office of Immigration Statistics, January. [http://www.dhs.gov/xlibrary/assets/statistics/publications/ois\\_ill\\_pe\\_2009.pdf](http://www.dhs.gov/xlibrary/assets/statistics/publications/ois_ill_pe_2009.pdf)
- Marcelli, Enrico A. and Paul M. Ong. 2002. "2000 Census Coverage of Foreign-Born Mexicans in Los Angeles County: Implications for Demographic Analysis." Paper presented at the 2002 annual meeting of the Population Association of America, Atlanta, GA, May.
- Passel, Jeffrey S. 2007. *Unauthorized Migrants in the United States: Estimates, Methods, and Characteristics*. OECD Social, Employment and Migration Working Papers No. 57. Paris: OECD Working Party on Migration, September. <http://www.oecd.org/dataoecd/41/25/39264671.pdf>
- Passel, Jeffrey S. 2007a. *Growing Share of Immigrants Choosing Naturalization*. Washington, DC: Pew Hispanic Center, March. <http://pewhispanic.org/files/reports/74.pdf>
- Passel, Jeffrey S. and Rebecca L. Clark. 1998. *Immigrants in New York: Their Legal Status, Incomes and Taxes*. Washington, DC: Urban Institute, April. <http://www.urban.org/url.cfm?ID=407432>
- Passel, Jeffrey S. and D'Vera Cohn. 2010. *U.S. Unauthorized Immigration Flows Are Down Sharply Since Mid-Decade*. Washington, DC: Pew Hispanic Center, September. <http://pewhispanic.org/files/reports/126.pdf>

- Passel, Jeffrey S. and D’Vera Cohn. 2009. *A Portrait of Unauthorized Immigrants in the United States*. Washington, DC: Pew Hispanic Center, April. <http://pewhispanic.org/files/reports/107.pdf>
- Passel, Jeffrey S. and D’Vera Cohn. 2009a. *Mexican Immigrants: How Many Come? How Many Leave?* Washington, DC: Pew Hispanic Center, July. <http://pewhispanic.org/files/reports/112.pdf>
- Passel, Jeffrey S. and D’Vera Cohn. 2008. *Trends in Unauthorized Immigration: Undocumented Inflow Now Trails Legal Inflow*. Washington, DC: Pew Hispanic Center, October. <http://pewhispanic.org/files/reports/94.pdf>
- Passel, Jeffrey S. and Paul Taylor. 2010. *Unauthorized Immigrants and Their U.S.-Born Children*. Washington, DC: Pew Hispanic Center, August. <http://pewhispanic.org/files/reports/125.pdf>
- Passel, Jeffrey S., Jennifer Van Hook, and Frank D. Bean. 2004. *Estimates of Legal and Unauthorized Foreign-born Population for the United States and Selected States, Based on Census 2000*. Report to the Census Bureau. Washington, DC: Urban Institute, June.
- Pew Hispanic Center. 2006. *Estimates of the Unauthorized Migrant Population for States based on the March 2005 CPS*. Immigration Factsheet. Washington, DC: Pew Hispanic Center, April. <http://pewhispanic.org/factsheets/factsheet.php?FactsheetID=17>
- Pew Research Center for the People & the Press. 2010. *Obama’s Ratings Little Affected by Recent Turmoil*. Washington, DC: Pew Research Center for the People & the Press, June. <http://people-press.org/report/?pageid=1746>
- U.S. Census Bureau. 2010. “Estimating ASEC Variances with Replicate Weights.” Washington, DC: U.S. Census Bureau. [http://smpbff2.dsd.census.gov/pub/cps/march/Use\\_of\\_the\\_Public\\_Use\\_Replicate\\_Weight\\_File\\_final\\_PR\\_2010.doc](http://smpbff2.dsd.census.gov/pub/cps/march/Use_of_the_Public_Use_Replicate_Weight_File_final_PR_2010.doc) linked from <http://www.bls.census.gov/cps ftp.html#cpsmarch>
- U.S. Department of Homeland Security. 2010. *2009 Yearbook of Immigration Statistics*. Tables 6 and 36, especially. Washington, DC: Office of Immigration Statistics, Department of homeland Security. <http://www.dhs.gov/files/statistics/publications/yearbook.shtm>

Warren, Robert. 2003. *Estimates of the Unauthorized Immigrant Population Residing in the United States: 1990 to 2000*. Washington, DC.: U.S. Immigration and Naturalization Service, Office of Policy and Planning, January.

[http://www.dhs.gov/xlibrary/assets/statistics/publications/III\\_Report\\_1211.pdf](http://www.dhs.gov/xlibrary/assets/statistics/publications/III_Report_1211.pdf)

## Appendix A: Additional Figures and Tables

**Table A1**  
States with Largest Share of  
Unauthorized Immigrants in the  
Labor Force, 2010

(thousands)

|                         | Total          | Unauthorized |             |
|-------------------------|----------------|--------------|-------------|
|                         | Labor Force    | Estimate     | Share       |
| <b>U.S. Total</b>       | <b>154,939</b> | <b>8,000</b> | <b>5.2%</b> |
| Nevada                  | 1,367          | 140          | 10.0%       |
| California              | 18,811         | 1,850        | 9.7%        |
| Texas                   | 12,261         | 1,100        | 9.0%        |
| New Jersey              | 4,679          | 400          | 8.6%        |
| Arizona                 | 3,116          | 230          | 7.4%        |
| Georgia                 | 4,777          | 325          | 7.0%        |
| Florida                 | 9,064          | 600          | 6.6%        |
| Maryland                | 3,100          | 190          | 6.2%        |
| District of<br>Columbia | 339            | 20           | 6.1%        |
| Illinois                | 6,719          | 375          | 5.6%        |
| New Mexico              | 909            | 50           | 5.6%        |
| North Carolina          | 4,658          | 250          | 5.4%        |

Note: Labor force estimates include employed and unemployed workers. Unauthorized estimates are rounded. Percentages are computed from unrounded data.

Source: Pew Hispanic Center estimates based on augmented March 2010 Supplement to the Current Population Survey. See Methodology.

PEW RESEARCH CENTER

**Table A2**  
States with Largest Number of  
Unauthorized Immigrants in the  
Labor Force, 2010

(thousands)

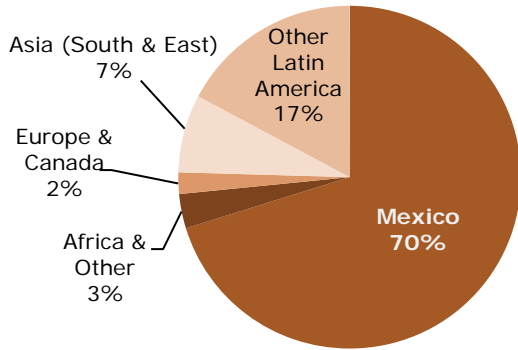
|                   | Total          | Unauthorized |             |
|-------------------|----------------|--------------|-------------|
|                   | Labor Force    | Population   | Share       |
| <b>U.S. Total</b> | <b>154,939</b> | <b>8,000</b> | <b>5.2%</b> |
| California        | 18,811         | 1,850        | 9.7%        |
| Texas             | 12,261         | 1,100        | 9.0%        |
| Florida           | 9,064          | 600          | 6.6%        |
| New York          | 9,742          | 450          | 4.7%        |
| New Jersey        | 4,679          | 400          | 8.6%        |
| Illinois          | 6,719          | 375          | 5.6%        |
| Georgia           | 4,777          | 325          | 7.0%        |
| North<br>Carolina | 4,658          | 250          | 5.4%        |
| Arizona           | 3,116          | 230          | 7.4%        |
| Maryland          | 3,100          | 190          | 6.2%        |
| Washington        | 3,623          | 190          | 5.1%        |
| Virginia          | 4,082          | 160          | 3.9%        |

Note: Labor force estimates include employed and unemployed workers. Unauthorized estimates are rounded. Percentages are computed from unrounded data.

Source: Pew Hispanic Center estimates based on augmented March 2010 Supplement to the Current Population Survey. See Methodology.

PEW RESEARCH CENTER

**Figure A1**  
**Parents' Country of Birth for**  
**Children of Unauthorized**  
**Immigrants, 2010**

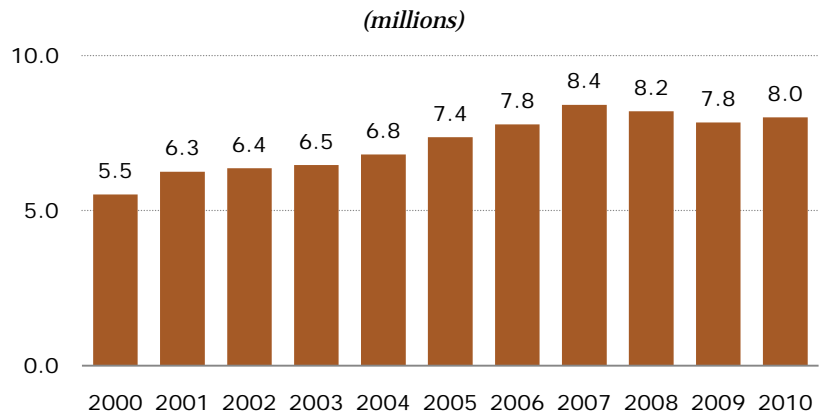


Notes: Includes parents of U.S.-born and immigrant children under 18 years old. Percentages may not add to 100% because of rounding.

Source: Pew Hispanic Center estimates based on augmented March Supplements to the Current Population Survey. See Methodology.

PEW RESEARCH CENTER

**Figure A2**  
**Unauthorized Immigrants in the U.S. Civilian**  
**Labor Force, 2000-2010**



Note: Includes employed and unemployed workers.

Source: Pew Hispanic Center estimates based on augmented March Supplements to the Current Population Survey. See Methodology.

PEW RESEARCH CENTER

**Table A3 – Estimates of Unauthorized Immigrant Population by State, Selected Years 1990 to 2010**

(thousands)

|                      | 2010                 |                        | 2007                 |                        | 2005                 | 2000                 | 1990                 |
|----------------------|----------------------|------------------------|----------------------|------------------------|----------------------|----------------------|----------------------|
|                      | Estimated Population | Range                  | Estimated Population | Range                  | Estimated Population | Estimated Population | Estimated Population |
| <b>U.S. Total</b>    | <b>11,200</b>        | <b>10,700 - 11,700</b> | <b>12,000</b>        | <b>11,500 - 12,500</b> | <b>11,100</b>        | <b>8,375</b>         | <b>3,525</b>         |
| Alabama              | 120                  | (75 – 160)             | 110                  | (55 – 160)             | 60                   | 25                   | 5                    |
| Alaska               | <10                  | <10                    | <10                  | <10                    | <10                  | <10                  | <5                   |
| Arizona              | 400                  | (275 – 500)            | 500                  | (400 – 575)            | 450                  | 300                  | 90                   |
| Arkansas             | 55                   | (35 – 75)              | 55                   | (40 – 70)              | 45                   | 30                   | 5                    |
| California           | 2,550                | (2,350 – 2,750)        | 2,750                | (2,600 – 2,900)        | 2,650                | 2,300                | 1,500                |
| Colorado             | 180                  | (140 – 230)            | 240                  | (210 – 275)            | 240                  | 160                  | 30                   |
| Connecticut          | 120                  | (90 – 150)             | 110                  | (90 – 140)             | 85                   | 75                   | 20                   |
| Delaware             | 25                   | (20 – 35)              | 30                   | (25 – 40)              | 25                   | 15                   | 5                    |
| District of Columbia | 25                   | (20 – 35)              | 30                   | (25 – 35)              | 25                   | 25                   | 15                   |
| Florida              | 825                  | (725 – 950)            | 1,050                | (950 – 1,150)          | 925                  | 575                  | 240                  |
| Georgia              | 425                  | (300 – 550)            | 475                  | (400 – 575)            | 425                  | 250                  | 35                   |
| Hawaii               | 40                   | (30 – 50)              | 30                   | (25 – 40)              | 25                   | 25                   | 5                    |
| Idaho                | 35                   | (20 – 45)              | 35                   | (25 – 40)              | 30                   | 25                   | 10                   |
| Illinois             | 525                  | (425 – 625)            | 500                  | (425 – 550)            | 350                  | 475                  | 200                  |
| Indiana              | 110                  | (70 – 160)             | 100                  | (80 – 130)             | 85                   | 65                   | 10                   |
| Iowa                 | 75                   | (45 – 100)             | 55                   | (40 – 75)              | 55                   | 25                   | 5                    |
| Kansas               | 65                   | (45 – 85)              | 70                   | (55 – 90)              | 60                   | 55                   | 15                   |
| Kentucky             | 80                   | (40 – 120)             | 45                   | (30 – 60)              | 50                   | 20                   | 5                    |
| Louisiana            | 65                   | (35 – 90)              | 35                   | (20 – 55)              | 25                   | 20                   | 15                   |
| Maine                | <10                  | <10                    | <10                  | <10                    | <10                  | <10                  | <5                   |
| Maryland             | 275                  | (200 – 325)            | 275                  | (220 – 300)            | 250                  | 120                  | 35                   |
| Massachusetts        | 160                  | (120 – 200)            | 190                  | (140 – 230)            | 200                  | 150                  | 55                   |
| Michigan             | 150                  | (110 – 190)            | 120                  | (85 – 140)             | 120                  | 95                   | 25                   |
| Minnesota            | 85                   | (60 – 100)             | 110                  | (85 – 140)             | 85                   | 55                   | 15                   |
| Mississippi          | 45                   | (20 – 70)              | 40                   | (20 – 60)              | 40                   | 10                   | 5                    |
| Missouri             | 55                   | (35 – 75)              | 45                   | (25 – 65)              | 40                   | 30                   | 10                   |
| Montana              | <10                  | <10                    | <10                  | <10                    | <10                  | <10                  | <5                   |
| Nebraska             | 45                   | (25 – 60)              | 50                   | (35 – 60)              | 45                   | 30                   | 5                    |
| Nevada               | 190                  | (150 – 230)            | 240                  | (200 – 275)            | 190                  | 140                  | 25                   |
| New Hampshire        | 15                   | (10 – 20)              | 20                   | (10 – 25)              | 15                   | <10                  | <5                   |
| New Jersey           | 550                  | (425 – 650)            | 600                  | (525 – 675)            | 475                  | 325                  | 95                   |
| New Mexico           | 85                   | (60 – 110)             | 80                   | (60 – 100)             | 65                   | 55                   | 20                   |
| New York             | 625                  | (525 – 725)            | 825                  | (725 – 925)            | 675                  | 725                  | 350                  |
| North Carolina       | 325                  | (240 – 425)            | 375                  | (300 – 450)            | 375                  | 210                  | 25                   |
| North Dakota         | <10                  | <10                    | <10                  | <10                    | <10                  | <10                  | <5                   |
| Ohio                 | 100                  | (65 – 140)             | 100                  | (70 – 130)             | 100                  | 55                   | 10                   |
| Oklahoma             | 75                   | (55 – 95)              | 55                   | (40 – 70)              | 60                   | 50                   | 15                   |
| Oregon               | 160                  | (110 – 220)            | 140                  | (100 – 180)            | 140                  | 110                  | 25                   |
| Pennsylvania         | 160                  | (110 – 210)            | 140                  | (90 – 180)             | 150                  | 85                   | 25                   |
| Rhode Island         | 30                   | (25 – 35)              | 30                   | (25 – 35)              | 30                   | 20                   | 10                   |
| South Carolina       | 55                   | (30 – 75)              | 70                   | (45 – 95)              | 55                   | 45                   | 5                    |
| South Dakota         | <10                  | <10                    | <10                  | <10                    | <10                  | <10                  | <5                   |
| Tennessee            | 140                  | (95 – 180)             | 160                  | (110 – 210)            | 130                  | 50                   | 10                   |
| Texas                | 1,650                | (1,450 – 1,850)        | 1,450                | (1,350 – 1,600)        | 1,400                | 1,100                | 450                  |
| Utah                 | 110                  | (70 – 150)             | 120                  | (90 – 150)             | 95                   | 65                   | 15                   |
| Vermont              | <10                  | <10                    | <10                  | <10                    | <10                  | <10                  | <5                   |
| Virginia             | 210                  | (170 – 250)            | 325                  | (250 – 375)            | 275                  | 150                  | 50                   |
| Washington           | 230                  | (140 – 325)            | 170                  | (120 – 220)            | 200                  | 160                  | 40                   |
| West Virginia        | <10                  | <10                    | <10                  | <10                    | <10                  | <10                  | <5                   |
| Wisconsin            | 100                  | (65 – 140)             | 90                   | (65 – 120)             | 100                  | 50                   | 10                   |
| Wyoming              | <10                  | <10                    | <10                  | <10                    | <10                  | <10                  | <5                   |

Notes: State ranges represent approximate 90 percent confidence intervals. Estimates for 2010 are averages of 2009 and 2010 for 34 states; estimates for 2009 are derived from the average distribution across states in 2006-2008.

Sources: Estimates for 2010, 2007 and 2005 are Pew Hispanic Center estimates based on augmented March Supplements to the Current Population Survey. Estimates for 2000 based on tabulations from 5 percent Public-Use Microdata Sample (PUMS) by Passel et al. 2004. Estimates for 1990 from Warren 2003. See Methodology.



**Table A4 – Number and Share for Labor Force and Total Population of Unauthorized Immigrants, for States, 2010**  
(thousands)

|                      | <u>Labor Force</u> |                         |             | <u>Population</u> |                         |             |
|----------------------|--------------------|-------------------------|-------------|-------------------|-------------------------|-------------|
|                      | Total              | Unauthorized Immigrants |             | Total             | Unauthorized Immigrants |             |
|                      |                    | Estimate                | Share       |                   | Estimate                | Share       |
| <b>U.S. Total</b>    | <b>154,939</b>     | <b>8,000</b>            | <b>5.2%</b> | <b>305,999</b>    | <b>11,200</b>           | <b>3.7%</b> |
| Alabama              | 2,263              | 95                      | 4.2%        | 4,695             | 120                     | 2.5%        |
| Alaska               | 358                | <10                     | <1.5%       | 690               | <10                     | <1%         |
| Arizona              | 3,116              | 230                     | 7.4%        | 6,559             | 400                     | 6.0%        |
| Arkansas             | 1,305              | 40                      | 3.0%        | 2,865             | 55                      | 1.8%        |
| California           | 18,811             | 1,850                   | 9.7%        | 37,210            | 2,550                   | 6.8%        |
| Colorado             | 2,664              | 120                     | 4.6%        | 4,994             | 180                     | 3.6%        |
| Connecticut          | 1,853              | 85                      | 4.5%        | 3,497             | 120                     | 3.4%        |
| Delaware             | 434                | 20                      | 4.5%        | 883               | 25                      | 3.0%        |
| District of Columbia | 339                | 20                      | 6.1%        | 600               | 25                      | 4.5%        |
| Florida              | 9,064              | 600                     | 6.6%        | 18,492            | 825                     | 4.5%        |
| Georgia              | 4,777              | 325                     | 7.0%        | 9,722             | 425                     | 4.4%        |
| Hawaii               | 612                | 30                      | 4.6%        | 1,253             | 40                      | 3.1%        |
| Idaho                | 768                | 20                      | 2.8%        | 1,529             | 35                      | 2.2%        |
| Illinois             | 6,719              | 375                     | 5.6%        | 12,841            | 525                     | 4.1%        |
| Indiana              | 3,168              | 70                      | 2.3%        | 6,382             | 110                     | 1.8%        |
| Iowa                 | 1,741              | 55                      | 3.2%        | 2,996             | 75                      | 2.5%        |
| Kansas               | 1,417              | 45                      | 3.3%        | 2,750             | 65                      | 2.4%        |
| Kentucky             | 2,081              | 55                      | 2.6%        | 4,276             | 80                      | 1.8%        |
| Louisiana            | 2,068              | 40                      | 2.0%        | 4,462             | 65                      | 1.4%        |
| Maine                | 678                | <10                     | <1%         | 1,301             | <10                     | <0.5%       |
| Maryland             | 3,100              | 190                     | 6.2%        | 5,702             | 275                     | 4.6%        |
| Massachusetts        | 3,509              | 130                     | 3.7%        | 6,658             | 160                     | 2.4%        |
| Michigan             | 4,886              | 100                     | 2.0%        | 9,873             | 150                     | 1.5%        |
| Minnesota            | 2,947              | 60                      | 2.1%        | 5,228             | 85                      | 1.6%        |
| Mississippi          | 1,223              | 35                      | 2.9%        | 2,871             | 45                      | 1.6%        |
| Missouri             | 3,057              | 40                      | 1.3%        | 5,983             | 55                      | 0.9%        |
| Montana              | 513                | <10                     | <1%         | 975               | <10                     | <0.5%       |
| Nebraska             | 1,006              | 30                      | 3.0%        | 1,788             | 45                      | 2.4%        |
| Nevada               | 1,367              | 140                     | 10.0%       | 2,655             | 190                     | 7.2%        |
| New Hampshire        | 754                | 10                      | 1.6%        | 1,316             | 15                      | 1.2%        |
| New Jersey           | 4,679              | 400                     | 8.6%        | 8,743             | 550                     | 6.2%        |
| New Mexico           | 909                | 50                      | 5.6%        | 1,997             | 85                      | 4.3%        |
| New York             | 9,742              | 450                     | 4.7%        | 19,474            | 625                     | 3.2%        |
| North Carolina       | 4,658              | 250                     | 5.4%        | 9,387             | 325                     | 3.5%        |
| North Dakota         | 375                | <10                     | <0.5%       | 634               | <10                     | <0.5%       |
| Ohio                 | 5,922              | 70                      | 1.2%        | 11,493            | 100                     | 0.9%        |
| Oklahoma             | 1,798              | 55                      | 3.0%        | 3,646             | 75                      | 2.0%        |
| Oregon               | 2,024              | 110                     | 5.3%        | 3,854             | 160                     | 4.3%        |
| Pennsylvania         | 6,264              | 110                     | 1.7%        | 12,439            | 160                     | 1.3%        |
| Rhode Island         | 570                | 20                      | 3.7%        | 1,034             | 30                      | 3.0%        |
| South Carolina       | 2,171              | 45                      | 2.1%        | 4,514             | 55                      | 1.2%        |
| South Dakota         | 443                | <10                     | <1.5%       | 802               | <10                     | <1%         |
| Tennessee            | 3,020              | 95                      | 3.1%        | 6,262             | 140                     | 2.2%        |
| Texas                | 12,261             | 1,100                   | 9.0%        | 24,858            | 1,650                   | 6.7%        |
| Utah                 | 1,359              | 75                      | 5.4%        | 2,812             | 110                     | 3.8%        |
| Vermont              | 360                | <10                     | <0.5%       | 618               | <10                     | <0.5%       |
| Virginia             | 4,082              | 160                     | 3.9%        | 7,808             | 210                     | 2.7%        |
| Washington           | 3,623              | 190                     | 5.1%        | 6,748             | 230                     | 3.4%        |
| West Virginia        | 769                | <10                     | <0.5%       | 1,806             | <10                     | <0.5%       |
| Wisconsin            | 3,093              | 65                      | 2.0%        | 5,600             | 100                     | 1.8%        |
| Wyoming              | 292                | <10                     | <1.5%       | 542               | <10                     | <1.5%       |

Notes: Labor force estimates include both employed and unemployed workers. Percentages are computed from unrounded data.

Sources: Pew Hispanic Center estimates based on residual methodology applied to March Supplements to the Current Population Survey. See Methodology.

PEW RESEARCH CENTER

## Appendix B: Methodology

### Unauthorized Immigrants—Overview

The data presented in this report on unauthorized and legal immigrants were developed with essentially the same methods used for previous reports (Passel and Cohn 2010, 2009, 2008). The state-level estimates for 2010 and 2007 are based on a variant of previous methods (e.g., Passel and Cohn 2010, Pew Hispanic Center 2006). The national and state estimates use a multistage estimation process, principally using March Supplements to the Current Population Survey (CPS). The CPS is a monthly survey of about 55,000 households conducted by the Census Bureau for the U.S. Bureau of Labor Statistics; the sample is expanded to about 80,000 households for the March supplement.

The first stage in the estimation process uses CPS data as a basis for estimating the number of legal and unauthorized immigrants included in the survey and the total number in the country using a residual estimation methodology. This method compares an estimate of the number of immigrants residing legally in the country with the total number in the CPS; the difference is assumed to be the number of unauthorized immigrants in the CPS. The legal resident immigrant population is estimated by applying demographic methods to counts of legal admissions covering the period from 1980 to the present, which are obtained from the Department of Homeland Security's Office of Immigration Statistics and its predecessor at the Immigration and Naturalization Service. The initial estimates here are calculated separately for age-gender groups in six states (California, Texas, Florida, New York, Illinois and New Jersey) and the balance of the country; within these areas, the estimates are further subdivided into immigrant populations from 35 countries or groups of countries by period of arrival in the United States. Variants of the residual method have been widely used and are generally accepted as the best current estimates. For more details, see Passel and Cohn 2010, 2008; and Passel 2007.

Then, having estimated the number of legal and unauthorized immigrants in the March CPS Supplements, we assign individual foreign-born respondents in the survey a specific status (one option being unauthorized immigrant) based on the individual's demographic, social, economic, geographic and family characteristics. The data and methods for the overall process were developed initially at the Urban Institute by Passel and Clark (especially 1998) and were extended by work of Passel, Van Hook and Bean (2004) and by subsequent work at the Pew Hispanic Center.

The final step adjusts the estimates of legal and unauthorized immigrants counted in the survey for omissions. The basic information on coverage is drawn principally from comparisons with Mexican data, U.S. mortality data and specialized surveys conducted at the time of the 2000 Census (Bean et al. 1998; Capps et al. 2002; Marcelli and Ong 2002). These adjustments increase the estimate of the legal foreign-born population, generally by 1-3% and the unauthorized immigrant population by 10-15%. The individual survey weights are adjusted to account for immigrants missing from the survey. These augmented files serve as a basis for the detailed tabulations of the family, social, economic and geographic characteristics presented here and in previous reports.

All estimates shown for 2000-2009 are identical to those in Passel and Cohn 2010 and Passel and Taylor 2010. The estimates for 2000-2008 use specially developed survey weights for the CPS to ensure consistency across the years in the underlying population figures. (See Passel and Cohn 2010 for a detailed discussion of the need for these weights and about their development.)

### State-level Estimates

State-level estimates should be treated with some caution because they are based on much smaller samples than the national estimates. Estimates from single years can be extremely volatile, so measurement of trends over time can be unreliable. To provide interpretable trends, previous estimates have relied on multiyear averages and regression methods (Passel and Cohn 2010, 2009; Pew Hispanic Center 2006).

The estimates presented here for states in 2010 are based on tabulations of the augmented March 2010 CPS file where the sample sizes exceed 50 unauthorized immigrant households (unweighted). There are 16 states and the District of Columbia where the single-year estimates are used for 2010: Arizona, California, Colorado, Connecticut, District of Columbia, Florida, Georgia, Illinois, Maryland, Nevada, New Jersey, New York, North Carolina, Oregon, Texas, Virginia and Washington. These states had more than 81% of the nation's estimated unauthorized immigrants in 2010. For the 34 states with fewer than 50 unauthorized immigrant households, the estimates shown for 2010 are an average of 2009 and 2010 CPS-based estimates. These states are Alabama, Alaska, Arkansas, Delaware, Hawaii, Idaho, Indiana, Iowa, Kansas, Kentucky, Louisiana, Maine, Massachusetts, Michigan, Minnesota, Mississippi, Missouri, Montana, Nebraska, New Hampshire, New Mexico, North Dakota, Ohio, Oklahoma, Pennsylvania, Rhode Island, South Carolina, South Dakota, Tennessee, Utah, Vermont, West Virginia, Wisconsin and Wyoming. For these same states, the workforce estimates in 2010 also are based on 2009-2010 averages. The total number of unauthorized

immigrants does not differ significantly for these two years and the distribution across states is more similar for 2009 and 2010 than for any pair of years between 2000 and 2010. The very high degree of similarity suggests that averaging to reduce sampling variability does not distort the trend analysis.

The state estimates for 2007 are derived by averaging the distributions of unauthorized immigrants across states. These average percentages were then applied to the national total for 2007 of 12.0 million unauthorized immigrants to derive the state estimates. The use of three years of data reduces substantially the margin of error of the resulting estimates. The distributions across states are quite similar for these years. The dissimilarity index for the 2006-2007 pair is smaller than all others except the 2009-2010 pair noted above. The index for 2007-2008 is the fifth smallest, behind 2009-2010, 2006-2007, 2000-2001 and 2001-2002. Margins of error for the state-level estimates are derived with replicate weights developed by the Census Bureau for the March Current Population Surveys of 2005-2010 (U.S. Census Bureau, 2010).

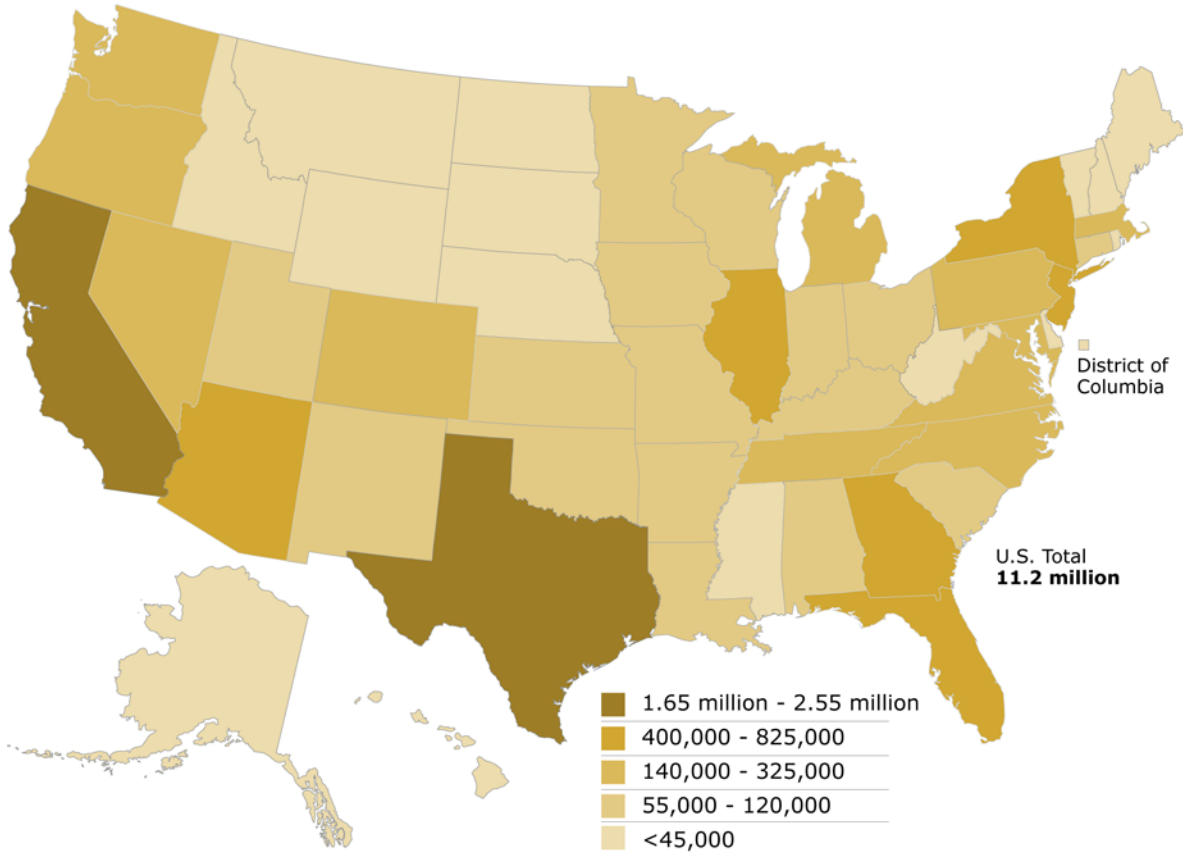
### **Rounding of Estimates**

All state-level estimates for unauthorized immigrant populations are presented as rounded numbers to avoid the appearance of unwarranted precision in the estimates. No estimates smaller than 10,000 are shown. Estimates in the range of 10,000-100,000 are rounded to the nearest 5,000; estimates in the range of 100,000-250,000 to the nearest 10,000; estimates smaller than 1 million to the nearest 25,000; and estimates larger than that to the nearest 50,000. The same rounding conventions are applied to all state-level estimates of unauthorized immigrant populations and labor force for 2000 and later and, more generally, to most of the data presented on unauthorized immigrants.

# Appendix C: Maps

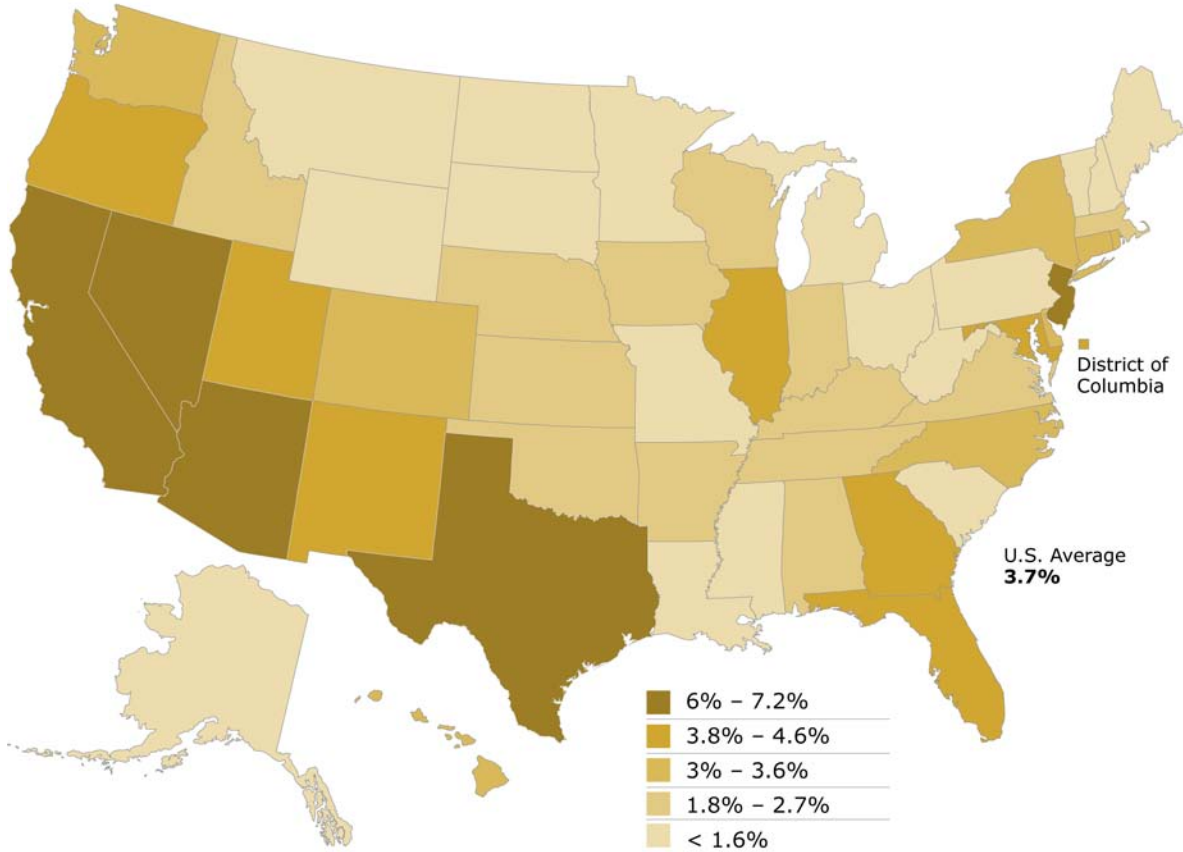
## Map C1: Population by State

### Unauthorized Immigrant Population by State, 2010



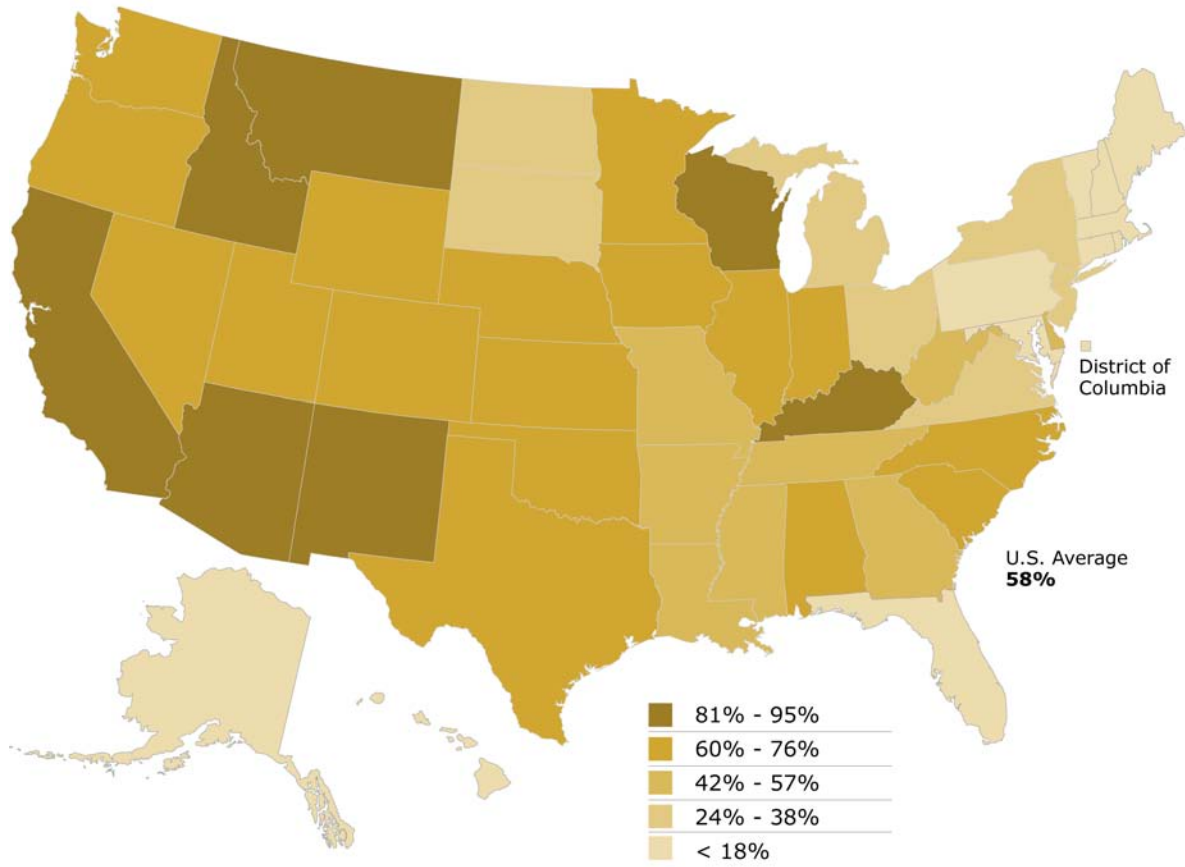
Map C2: Share of State Population

**Unauthorized Immigrant Share of Population**  
by State, 2010



Map C3: Share Mexican

### Mexicans as Share of Unauthorized Immigrants by State, 2010



## Map C4: Percent of Labor Force

## Unauthorized Immigrants as Share of Labor Force by State, 2010

